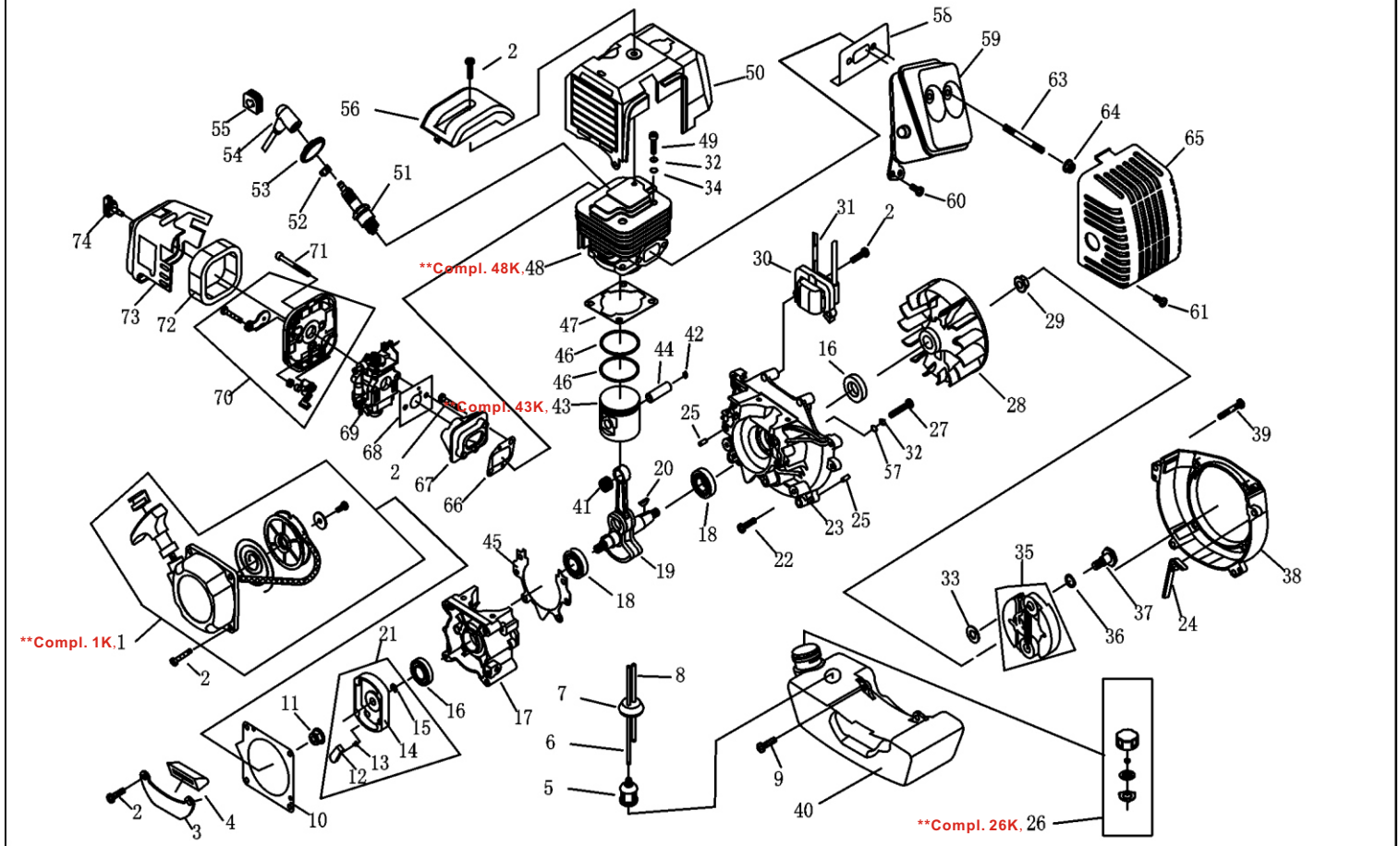
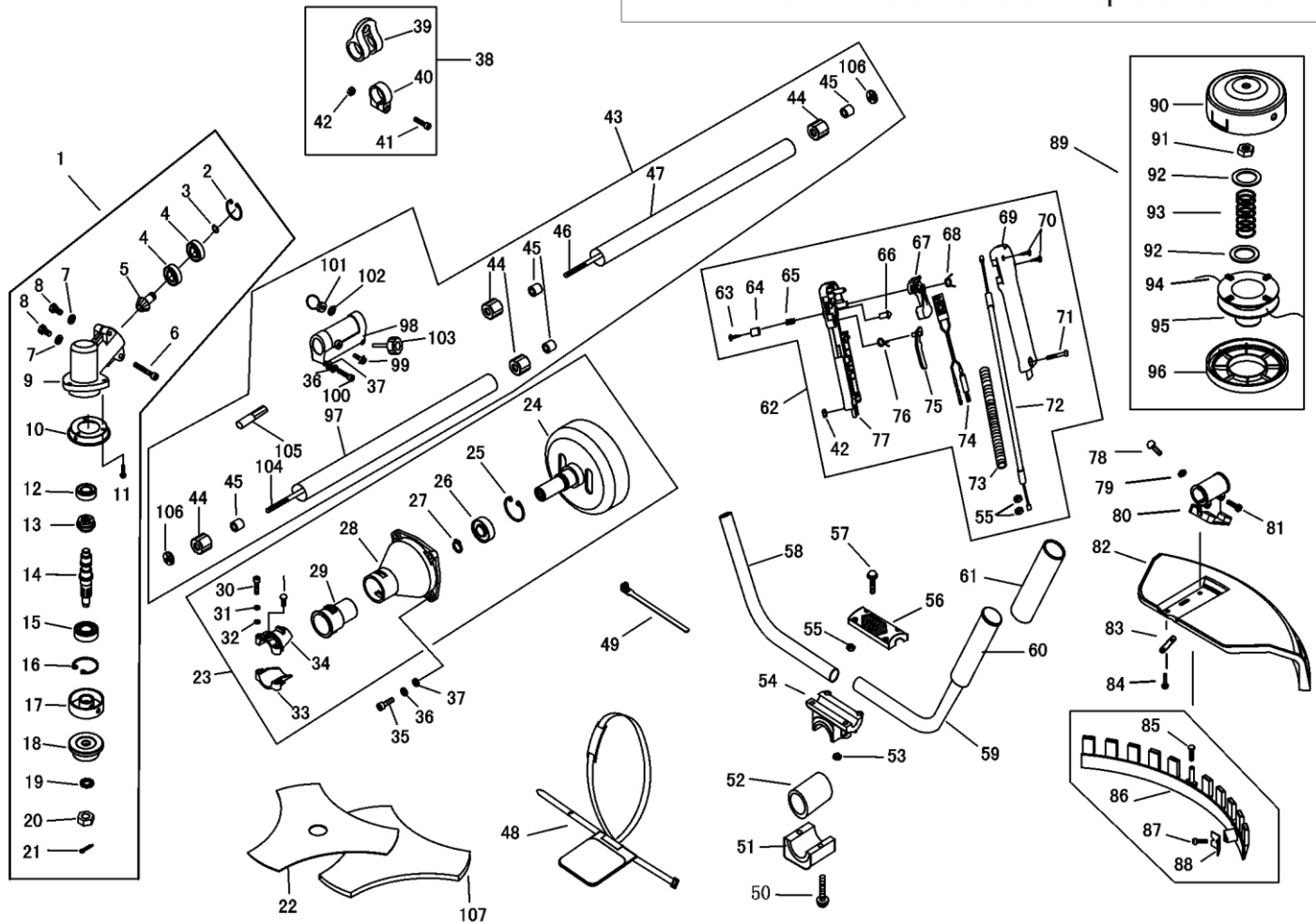


FIG: 1:T334 Gasoline Engine Explosive Picture



Ser.NO.	Code	Part Name	Qty	Ser.NO.	Code	Part Name	Qty	Ser.NO.	Code	Part Name	Qty
1-1	16334101	STARTER	1	1-26	16334126	Lid ASS'Y	1	1-48K	16334148K	Cylinder Block Assy (Including Piston Assy)	1
1-1K	16334101K	Recoil Starter ASSY	1	1-26K	16334126K	Fule Tank Cap Assy	1	1-49	16334149	SCREW M5×20	4
1-2	16334102	Screw M5×20	6	1-27	16334127	Screw M5×30	4	1-50	16334150	Guide Cover Ass'y	1
1-3	16334103	Stand	1	1-28	16334128	MAGNETO ROTOR COMP.	1	1-51	16334151	Spark Plug	1
1-4	16334104	Rubber Cover	1	1-29	16334129	NUT M8	1	1-52	16334152	SPRING	1
1-5	16334105	Cleaner Cover	1	1-30	16334130	IGNITION COIL COMP.	1	1-53	16334153	PLUG CAP	1
1-6	16334106	FUEL PIPE 2.5*4.5*200	1	1-31	16334131	CORD COMP.	1	1-54	16334154	CAP	1
1-7	16334107	PLUG	1	1-32	16334132	WASHER GB93 5	8	1-55	16334155	PLUG	1
1-8	16334108	FUEL PIPE 2.5*4.5*45	1	1-33	16334133	WasherB	2	1-56	16334156	COVER	1
1-9	16334109	SCREW M5X20	2	1-34	16334134	WASHER GB848 5	4	1-57	16334157	WASHER GB97 5	4
1-10	16334110	Gasket	1	1-35	16334135	Expander Combination	1	1-58	16334158	GASKET	1
1-11	16334111	NUT M8	1	1-36	16334136	WASHER	2	1-59	16334159	MUFFLER	1
1-12	16334112	START CLAW	1	1-37	16334137	SCREW PIN	2	1-60	16334160	SCREW M5X12	1
1-13	16334113	START SPRING	1	1-38	16334138	FAN COVER	1	1-61	16334161	SCREW M5X12	1
1-14	16334114	START REEL	1	1-39	16334139	Bolt M5×20	4	1-62	16334162	Screw	1
1-15	16334115	STOP RING 4	1	1-40	16334140	Fuel Tank	1	1-63	16334163	Bolt	2
1-16	16334116	OIL-SEAL 12*22*7	2	1-41	16334141	BEARING	1	1-64	16334164	Nut M5	2
1-17	16334117	CRANK CASE	1	1-42	16334142	RING	2	1-65	16334165	Muffler Cover	1
1-18	16334118	BEARING 6201/P5	2	1-43	16334143	PISTON	1	1-66	16334166	Gasket	1
1-19	16334119	CRANK SHAFT	1	1-43K	16334143K	Piston Assy (Including Ring Set, Pin & circlip)	1	1-67	16334167	Admitting Pipe	1
1-20	16334120	KEY 3X5X13	1	1-44	16334144	PISTON PIN	1	1-68	16334168	Gasket	1
1-21	16334121	START REEL	1	1-45	16334145	GASKET	1	1-69	16334169	Carburetor H119D2	1
1-22	16334122	Screw M5×12	2	1-46	16334146	PISTON RING	2	1-70	16334170	CLEANER INSIDE COVER COMBINATION	1
1-23	16334123	Crank Case	1	1-47	16334147	GASKET	1	1-71	16334171	Screw M5x55	2
1-24	16334124	Flash Pan	1	1-48	16334148	CYLINDER	1	1-72	16334172	Cleaner Outside Cover	1
1-25	16334125	Pin B4×10	4					1-73	16334173	Filter Net	1

FIG :2: T334 Brush Cutter Explosive Picture



Ser.NO.	Code	Part Name	Qty	Ser.NO.	Code	Part Name	Qty	Ser.NO.	Code	Part Name	Qty	Ser.NO.	Code	Part Name	Qty
2-1	16334201	gera case ass'y	1	2-26	16334226	bearing(6202-2RS/P5)	1	2-51	16334251	handle cover	1	2-76	16334276	safety guard	1
2-2	16334202	stop ring(Φ26)	1	2-27	16334227	stop ring (Φ15 ¹)	1	2-52	16334252	level ass'y	1	2-77	16334277	spacer	1
2-3	16334203	stop ring(Φ10)	1	2-28	16334228	clutch case	1	2-53	16334253	screw M5X10	1	2-78	16334278	screw(M5×16)	4
2-4	16334204	bearing(629-2RS)	2	2-29	16334229	rubber cover	1	2-54	16334254	clamp	1	2-79	16334279	screw(ST4.2×16)	1
2-5	16334205	pinion	1	2-30	16334230	screw (M5×25)	3	2-55	16334255	box,right	1	2-80	16334280	blade	1
2-6	16334206	screw(M5×25)	2	2-31	16334231	flexible washer(Φ5)	3	2-56	16334256	rubber cover	1	2-81	16334281	screw(ST4.2×12)	2
2-7	16334207	washer	2	2-32	16334232	flap washer(Φ5)	3	2-57	16334257	clamp	1	2-82	16334282	guard ass'y	1
2-8	16334208	bolt (M6×12)	2	2-33	16334233	clamp B	1	2-58	16334258	stop switch	1	2-83	16334283	harness ass'y	1
2-9	16334209	gear case	1	2-34	16334234	clamp A	1	2-59	16334259	tine	1	2-84	16334284	harness ass'y	1
2-10	16334210	safety guard	1	2-35	16334235	screw(M6×20)	4	2-60	16334260	spring	1	2-85	16334285	nylon cutter head	1
2-11	16334211	screw (M5×12)	3	2-36	16334236	flexible washer(Φ6)	4	2-61	16334261	spring	1	2-86	16334286	case	1
2-12	16334212	bearing(6000/P5)	1	2-37	16334237	flap washer(Φ6)	4	2-62	16334262	safety lever	1	2-87	16334287	left nut A	1
2-13	16334213	gear	1	2-38	16334238	holder ass'y	1	2-63	16334263	spring	1	2-88	16334288	washer	1
2-14	16334214	gear shaft	1	2-39	16334239	harness clamp	1	2-64	16334264	throttle lever	1	2-89	16334289	spring	1
2-15	16334215	bearing(6202-2RS/P5)	1	2-40	16334240	clamp	1	2-65	16334265	cable comp	1	2-90	16334290	rope	1
2-16	16334216	stop ring (Φ32)	1	2-41	16334241	screw (M5×20)	1	2-66	16334266	tube	1	2-91	16334291	cord holder	1
2-17	16334217	holder A	1	2-42	16334242	nut (M5)	4	2-67	16334267	screw M5X20	1	2-92	16334292	cover	1
2-18	16334218	holder B	1	2-43	16334243	pipe comp	1	2-68	16334268	screw M5X30	1	2-93	16334293	screw M6X30	1
2-19	16334219	washer(Φ10)	1	2-44	16334244	rubber cover	6	2-69	16334269	box,left	1	2-94	16334294	screw MX12	1
2-20	16334220	left nut(M10×1.25)	1	2-45	16334245	oil-bearing(8×14×14)	6	2-70	16334270	nut M6	2	2-95	16334295	washer	1
2-21	16334221	pin (2× 16)	2	2-46	16334246	drive shaft A	1	2-71	16334271	pipe join	1	2-96	16334296	Screw	1
2-22	16334222	blade(1.4×255×25.4)	1	2-47	16334247	pipe(26×1.5×778)	1	2-72	16334272	screw(M5×20)	1	2-97	16334297	drive shaft 2	1
2-23	16334223	clutch comp	1	2-48	16334248	harness ass'y	1	2-73	16334273	washer(Φ5)	1	2-98	16334298	Join	1
2-24	16334224	clutch drum comp	1	2-49	16334249	screw M5X35	4	2-74	16334274	bracket	1	2-99	16334299	Lock patch	2
2-25	16334225	stop ring (Φ35 ¹)	1	2-50	16334250	handle	1	2-75	16334275	screw(M5×30)	2	2-100	163342100	pipe	1
												2-101	163342101	pin	1